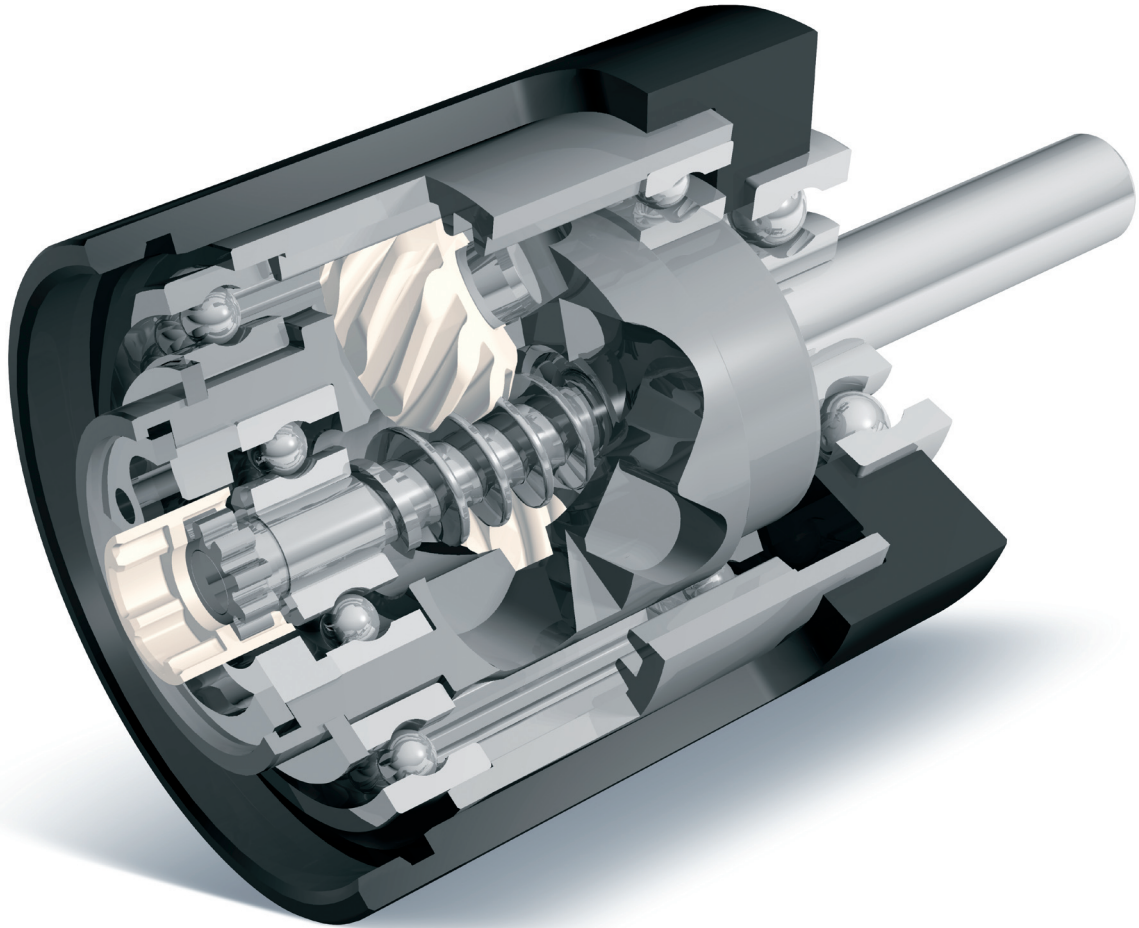


NEW

Pat. pend.

# Koaxdrive KD 32

## Silent and powerful



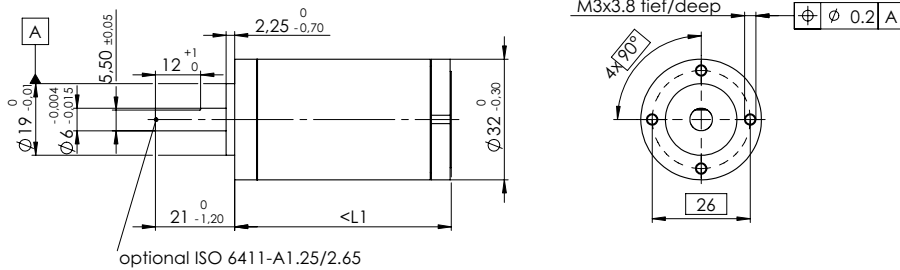
**Koaxdrive KD 32** Ø32 mm, 1.0 – 4.5 Nm

- the best of two technologies: combination of worm and planetary gearhead
- for noise-sensitive applications
- high reduction ratios in one stage
- fast input speeds
- special versions possible, e.g. with self-locking facility
- modular system with maxon motors

**maxon motor**  
driven by precision

# Koaxdrive KD 32 Ø32 mm, 1.0 – 4.5 Nm

## Quiet Planetary Gearhead



optional ISO 6411-A1.25/2.65

Technical Data	
Planetary Gearhead	special teeth
Output shaft	stainless steel
Bearing at output	ball bearing
Radial play, 5 mm from flange	max. 0.14 mm
Axial play	max. 0.4 mm
Max. radial load, 10 mm from flange	140 N
Max. permissible axial load	120 N
Max. permissible force for press fits	120 N
Sense of rotation, drive to output	=
Recommended input speed	< 8000 min <sup>-1</sup>
Recommended temperature range	-15 ... +80° C
higher reduction ratios on request	

- Stock program
- Standard program
- Special program (on request)

Gearhead Data (provisional)	Order number							
	354722	354725	354728	354731	354734	354737	354740	
1 Reduction	11 : 1	41 : 1	98 : 1	152 : 1	253 : 1	392 : 1	760 : 1	
2 Reduction absolute	11 <sub>1</sub>	286 <sub>7</sub>	391 <sub>4</sub>	7436 <sub>49</sub>	6336 <sub>25</sub>	9792 <sub>25</sub>	19008 <sub>25</sub>	
3 Efficiency %	78	70	65	63	63	59	55	
4 Mass inertia gcm <sup>2</sup>	0.65	0.60	0.35	0.60	0.60	0.35	0.22	
<b>Order number</b>	<b>354723</b>	<b>354726</b>	<b>354729</b>	<b>354732</b>	<b>354735</b>	<b>354738</b>	<b>354741</b>	
1 Reduction	17 : 1	53 : 1	123 : 1	196 : 1	304 : 1	455 : 1	911 : 1	
2 Reduction absolute	17 <sub>1</sub>	264 <sub>5</sub>	858 <sub>7</sub>	6864 <sub>35</sub>	1518 <sub>5</sub>	22308 <sub>49</sub>	4554 <sub>5</sub>	
3 Efficiency %	72	70	61	63	63	55	55	
4 Mass inertia gcm <sup>2</sup>	0.38	0.60	0.22	0.60	0.60	0.22	0.22	
<b>Order number</b>	<b>354724</b>	<b>354727</b>	<b>354730</b>	<b>354733</b>	<b>354736</b>	<b>354739</b>	<b>354742</b>	
1 Reduction	33 : 1	63 : 1	158 : 1	235 : 1	364 : 1	588 : 1	1091 : 1	
2 Reduction absolute	33 <sub>1</sub>	442 <sub>7</sub>	792 <sub>5</sub>	11492 <sub>49</sub>	5819 <sub>16</sub>	20592 <sub>35</sub>	17457 <sub>16</sub>	
3 Efficiency %	78	70	65	63	63	59	55	
4 Mass inertia gcm <sup>2</sup>	0.65	0.60	0.35	0.60	0.60	0.35	0.22	
<b>Order number</b>		<b>354962</b>	<b>354744</b>			<b>354963</b>		
1 Reduction		82 : 1	190 : 1			705 : 1		
2 Reduction absolute		408 <sub>5</sub>	759 <sub>4</sub>			9867 <sub>14</sub>		
3 Efficiency %		70	65			59		
4 Mass inertia gcm <sup>2</sup>		0.60	0.35			0.35		
5 Max. motor shaft diameter mm	3	3	3	3	3	3	3	
6 Number of stages	1	2	2	3	3	3	3	
7 Max. continuous torque Nm	1	3.5	3.5	4.5	4.5	4.5	4.5	
8 Intermittently permissible torque at gear output Nm	1.25	4.4	4.4	6.5	6.5	6.5	6.5	
9 Weight g	130	230	230	262	262	262	262	
10 Average backlash no load °	3.5	1	1	1	1	1	1	
11 Gearhead length L1 mm	40.7	57.5	57.5	67.2	67.2	67.2	67.2	

Combination		Overall length [mm] = Motor length + Gearhead length						
+ Motor	Page	95.2	112.1	112.1	121.8	121.8	121.8	121.8
RE 25	77/79							
EC-max 30	178	82.8	99.6	99.6	109.3	109.3	109.3	109.3