



CHECK VALVE → DN50-DN800 Wafer Type Dual-Plate Check valve

Medium Capability:

Freshwater, Sea water, Air, steam, food, medicine and kinds of oil, acid, alkali, salt.

Feature:

Long service life with reliable seal and without frequent maintenance. Butterfly valve have flow characteristics three times better than globe valve, and about 75% of a same size gate valve. Butterfly valve can be used for on/off service and throttling, They are superior in Multi-function as compared to gate or globe valves. Butterfly valve can be widely used in chemical field due to trim options and choice of elastomeric liner .

Butterfly valve have feature of light in weight and small in size, for example, weight and size of a 10” butterfly valve are 1/9 and 1/6 of a 10” gate valve. So butterfly valve is easy to install and save cost of piping system. Butterfly valve with resilient seat design can be bubble tight as compared to metal seated gate or globe valves. Butterfly valves offer 90-degree open to close. Butterfly valve is approximate 35-40% cost of a same size gate valve. Also low installed cost than gate valve.

Properly installed butterfly valves are self cleaning and are less susceptible to failure due to trash material in pipe.

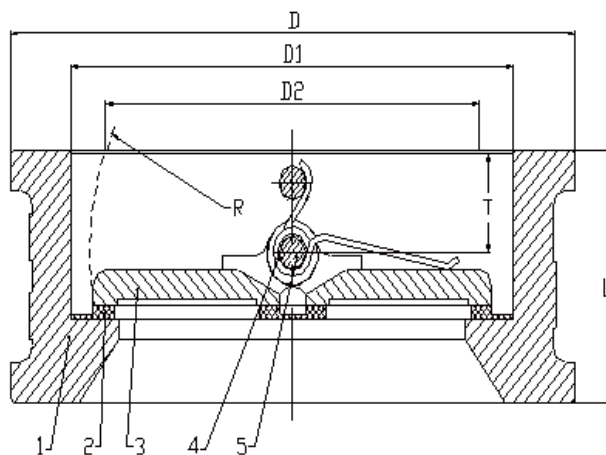


Item	Qty	Parts Name
1	1	Body
2	1	Seat
3	2	Disc
4	2	Spring
5	2	Stem



Structure and Parts List for Dual Plate Check Valve

Nominal Pressure: PN10/PN16

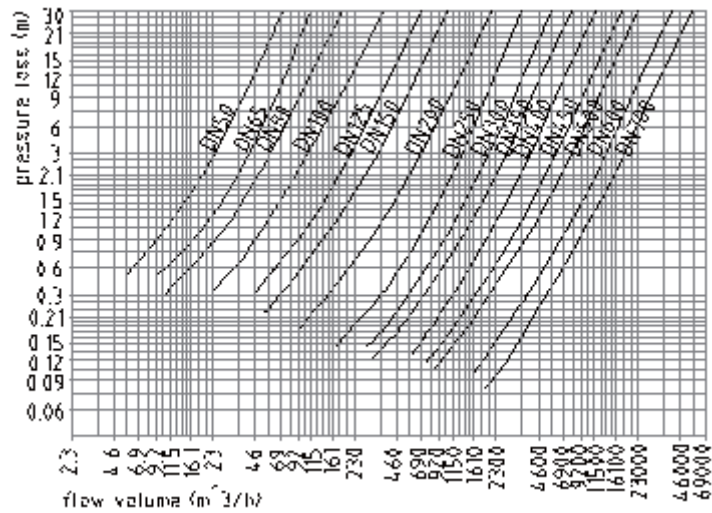


Technical Specification for Dual Plate Check Valve

Size	DN40~DN800	DN40~DN600
Pressure	1.0MPa	1.6MPa
Shell	1.1MPa	1.76MPa
Test Pressure		
Seat	1.5MPa	2.4MPa
Service	1-EPDM	-30°C~+110°C
	2-Neoplene	-7°C~+93°C
Temperature	3-NBR	-12°C~+82°C
	4-Viton	+10°C~+150°C
Service Fluid	Freshwater, Sea water, Air, steam, food, medicine and kinds of oil, acid, alkali, salt.	



Pressure Loss Chart



Body	DISC	Stem	Bushing	Seat	
	Material			Material	WorkingTemperature
					(°C)
C. I	DI	416SS	Lubricative Bronze	NR	-20°C~+85°C
D. I	WCB	431SS	Macromolecule +PTFE	HYPALON	-18°C~+135°C
WCB	AL-Brz	316SS	316SS+PTFE	EPDM	-30°C~+110°C
AL-Brz	Stainless Steel			NEOPRENE	-7°C~+93°C
StainlessSteel				NBR	-12°C~+82°C
				WRR	-10°C~+50°C
				VITON	-23°C~+150°C
				HRR	-20°C~+150°C
				PTFE	+10°C~+150°C



Outline Dimensions and Weight for Wafer Type Dual Plate Check Valve

Size		D	D1	D2	L	R	T	Weight
inch	mm							Kgs.
2	50	107	65	43.3	43	28.8	19	1.5
2 1/2	65	127	80	60.2	46	36.1	20	2.4
3	80	142	94	66.4	64	43.4	28	3.6
4	100	162	117	90.8	64	52.8	27	5.7
5	125	192	145	116.9	70	65.7	30	7.3
6	150	218	170	144.6	76	78.6	31	9.0
8	200	273	224	198.2	89	104.4	33	17.0
10	250	328	265	233.7	114	127	50	26.0
12	300	378	310	279.05	114	146	43	37.0
14	350	438	360	327.87	127	170	45	54.9
16	400	489	410	375.88	140	195	52	78.0
18	450	555	450	414.06	152	215	58	119.0
20	500	594	505	467.83	152	241	58	122.0
24	600	700	624	569.59	178	294	73	174.0
28	700	820	720	662.75	229	345	96	219.0
32	800	930	825	762.72	241	394	99	316.0